

# Reptile and Amphibian Egg Simulation

To set up this simulation you need:

- 1 pan of sand with a few grapes on it (to simulate reptile eggs)
- 1 pan of water with tapioca pudding pearls (to simulate amphibian eggs) \*this works best if the pearls are allowed to set in the water for several hours

Directions:

1. Call students over to observe the eggs by touching and looking.
2. Have students use what they already know about reptiles and amphibians to infer which eggs are which and why.
3. Use the following activity as a wrap-up or assessment.

Name \_\_\_\_\_

Date \_\_\_\_\_

# \_\_\_\_\_

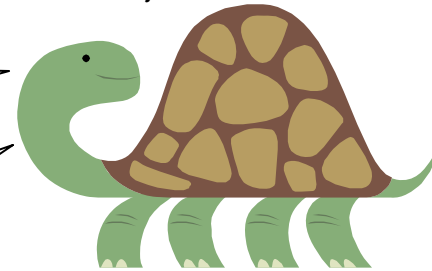
## Whose Egg is Whose?

Directions: Use details about reptile and amphibian eggs to help Alice Amphibian and Rita Reptile figure out whose egg is whose. Circle your answer and then write your details.

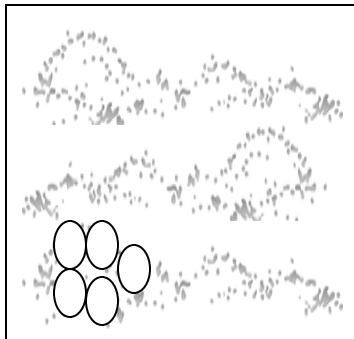


Hi! I'm Alice Amphibian!

And I'm Rita Reptile!



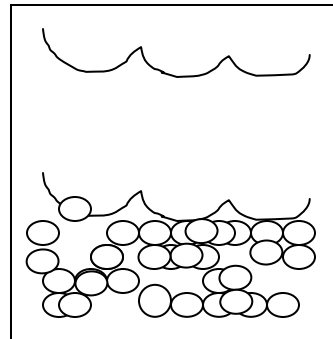
HELP! We mixed up our eggs!



These are:  
Reptile eggs  
Amphibian eggs

I know because...

-----  
-----  
-----  
-----  
-----  
-----



These are:  
Reptile eggs  
Amphibian eggs

I know because...

-----  
-----  
-----  
-----  
-----  
-----